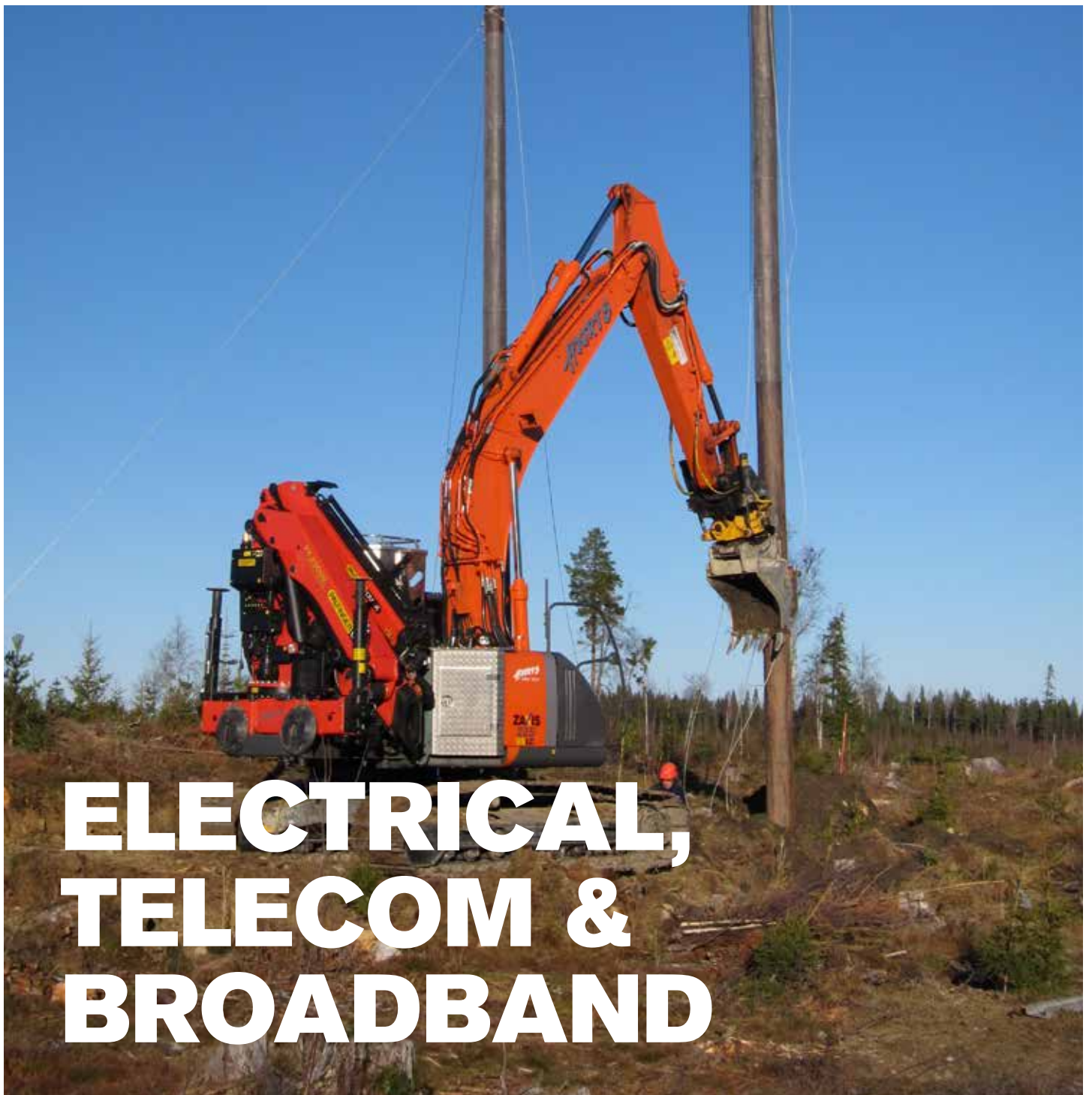


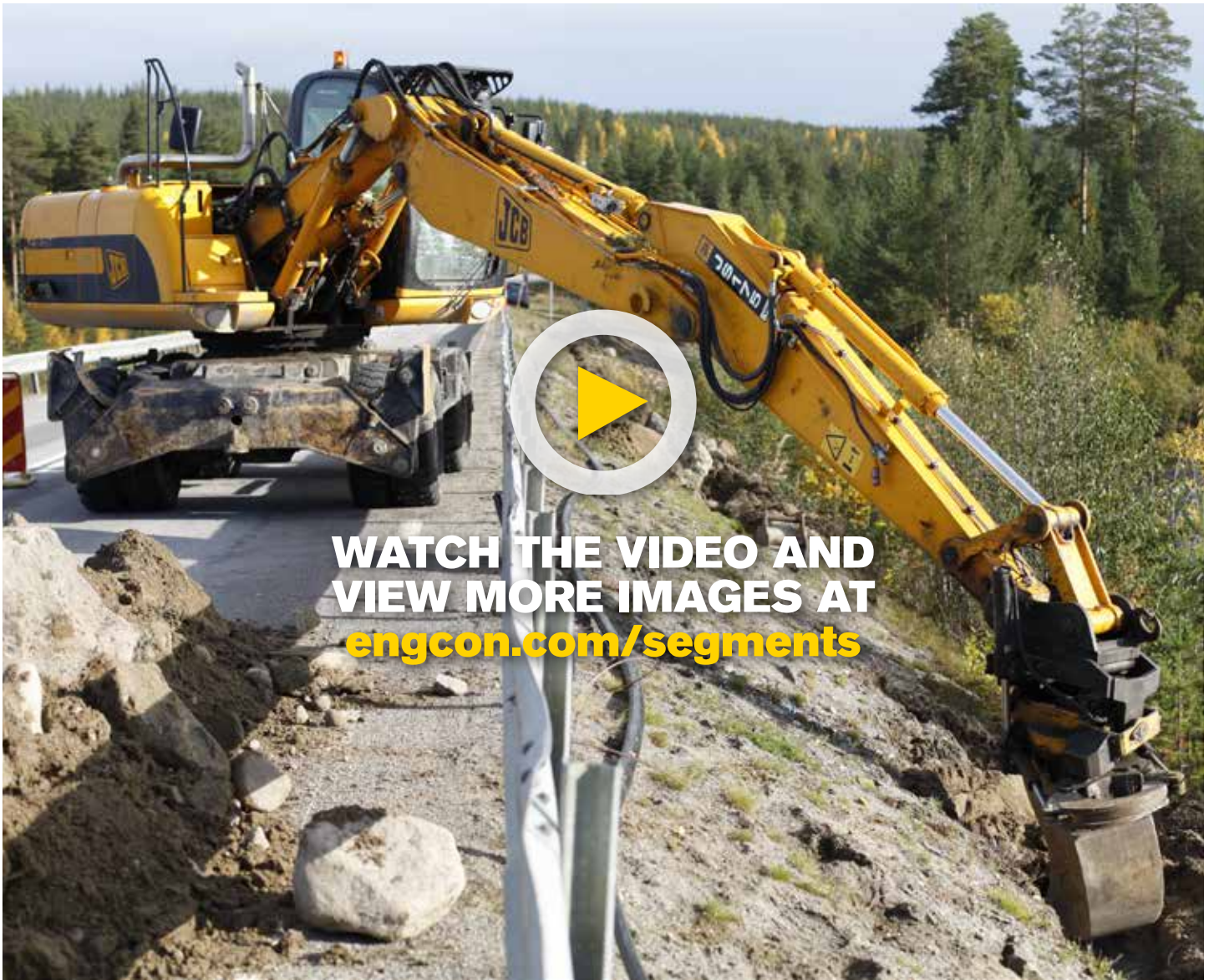
**engcon®**

**Segment:**



**ELECTRICAL,  
TELECOM &  
BROADBAND**







# ELECTRICAL, TELECOM & BROADBAND



**Excavations in these areas are often associated with a ‘lack of space, narrow access and precision excavation’.**

engcon's tiltrotators provide an elegant solution to such problems. Thanks to its ability to rotate and tilt the bucket it's no longer necessary to constantly reposition the machine to get at the job.

Exposing existing cables is no longer difficult. Rotate the bucket through 90 degrees and then tilt it to a suitable angle to excavate beside, under or above an existing cable with the utmost precision.

The need for manual labour is minimized and so too is the risk of injury to personnel in the vicinity. Tests show that cable trenching using the tiltrotator is up to 40 per cent more efficient, making whole projects more profitable and allowing estimates to be met.

## Savings spreadsheet

**Type of work and location:** Urban centres/small areas

**Type of excavator:** Excavation: Crawler, 16 tonnes – Other: Backhoe, 12 tonnes

Work, type description	Price per hr. (approx.)	Time savings avg. value	Estimated savings	
			Per hour	Per year (1,800 hrs.)
Excavation	€60	20%	€12	€21,600
Trenching	€70	20%	€14	€25,200
Pole erection	€70	20%	€14	€25,200

**Type of work and location:** Countryside, open areas

**Type of excavator:** Crawler, 20 tonnes

Excavation	€60	15%	€9	€16,200
Trenching	€70	20%	€14	€25,200
Pole erection	€70	15%	€10.50	€18,900

For more information on engcon products, please visit our website [www.engcon.com/international](http://www.engcon.com/international) or visit the segment special [www.engcon.com/segments](http://www.engcon.com/segments) for more images and videos for this specific type of work.



## MAXIMIZES EXCAVATORS

With the tiltrotator you maximize your excavator and increase your profitability through: **Minimized manual labor, fewer machine movements, a more flexible machine, greater precision, greater safety when changing attachments, lower fuel consumption, less wear on the machine and a market-leading partner.** In short, the tiltrotator is a system that allows you to perform jobs that used to be impossible.