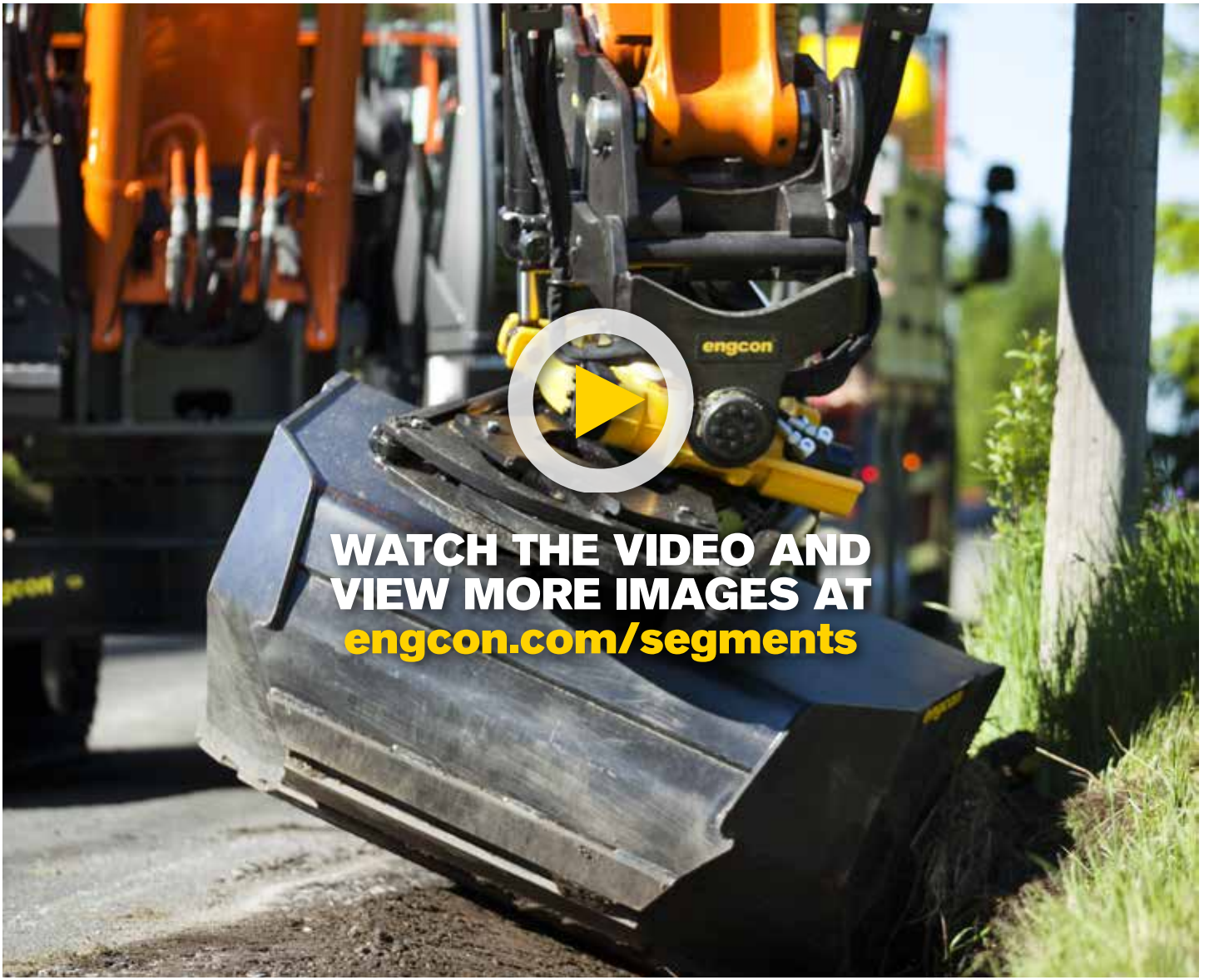


engcon[®]

Segment:



**ROAD
CONSTRUCTION**



**WATCH THE VIDEO AND
VIEW MORE IMAGES AT
engcon.com/segments**



ROAD CONSTRUCTION



Road construction involves a number of different work situations, and engcon tiltrotators simplify tasks considerably.

Ditching, stripping, terracing, pipe laying and grapple operations, etc. no longer mean constantly repositioning the machine.

Savings spreadsheet

Type of work and location: Road construction

Type of excavator: Bulk moving: Crawler, 32 tonnes – Other: Crawler 25 tonnes

Work, type description	Price per hr. (approx.)	Time savings avg. value	Estimated savings	
			Per hour	Per year (1,800 hrs.)
Bulk moving	€80	0%	€0	€0
Trenching	€80	20%	€16	€28,800
Pipe laying	€80	15%	€12	€21,600
Levelling	€80	25%	€20	€36,000
Sweeping	€	%	€	€
Tarmac Cutting	€	%	€	€
Ditching	€	%	€	€

For more information on engcon products, please visit our website www.engcon.com/international or visit the segment special www.engcon.com/segments for more images and videos for this specific type of work.



MAXIMIZES EXCAVATORS

With the tiltrotator you maximize your excavator and increase your profitability through: **Minimized manual labor, fewer machine movements, a more flexible machine, greater precision, greater safety when changing attachments, lower fuel consumption, less wear on the machine and a market-leading partner.** In short, the tiltrotator is a system that allows you to perform jobs that used to be impossible.